


GULFVIEW

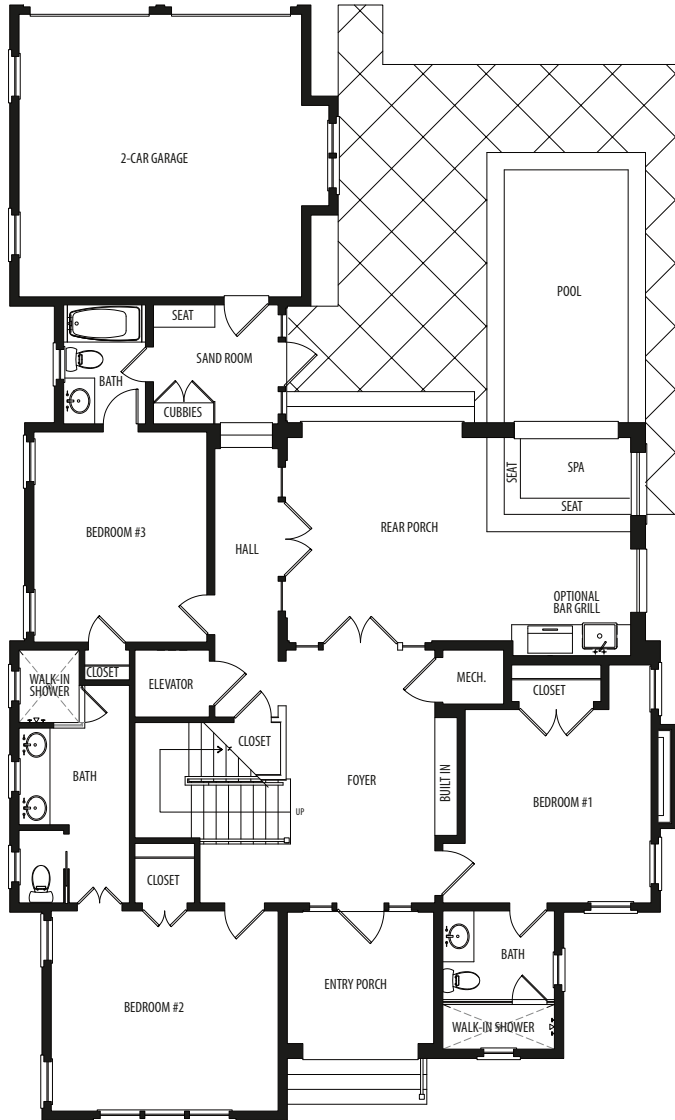
AT WATERSOUND BEACH



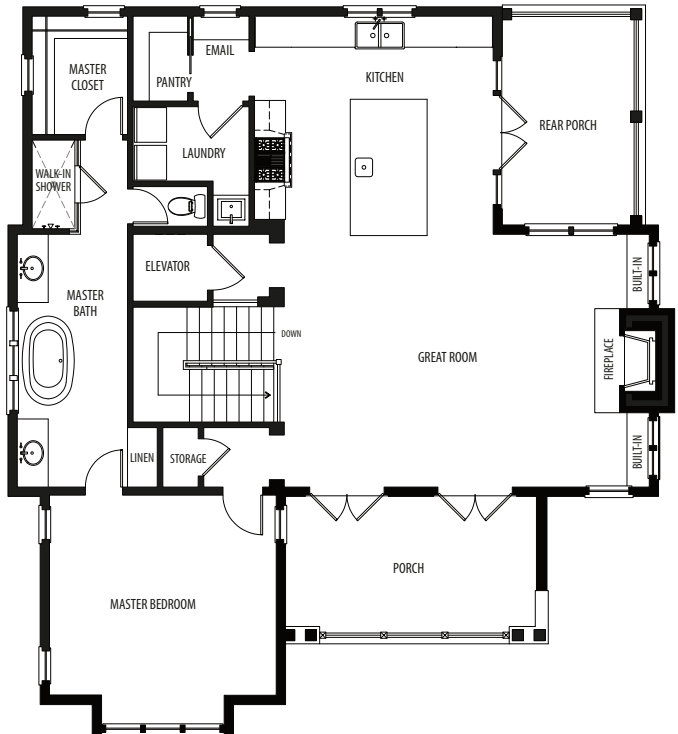
SPYGLASS

GULFVIEW AT WATERSOUND BEACH – SPYGLASS

ROOM DIMENSIONS	4 BEDROOMS - 4 BATHS - POOL - SPA	
master bedroom.....13'-6" x 15'-3" bedroom #1.....13'-0" x 12'-6" bedroom #2.....13'-6" x 15'-3" bedroom #3.....14'-0" x 11'-6" kitchen.....14'-8" x 16'-0" great room.....17'-0" x 13'-0"	GULFVIEW CONSTRUCTION	
	SQUARE FOOTAGE conditioned – 2,970 porches – 775 garage – 415	



first floor



second floor



© 2012 The St. Joe Company. "JOE," "St. Joe," "WaterSound Beach", the "WaterSound Beach" logo, and the "Taking Flight" design are service marks of The St. Joe Company. The materials and features and amenities described and depicted herein are based upon current development plans, which are subject to change without notice. WaterSound Beach Club, Camp Creek Golf Club, and Shark's Tooth Golf Club are private clubs for St. Joe designated communities which require purchase of separate memberships subject to application and acceptance and may be subject to payment of fees, membership requirements, rules or other limitations which are subject to change. This does not constitute an offer to sell real property in any jurisdiction where prior registration or other advance qualifications of real property is required, including New York. Square footages and room dimensions are approximations. Void where prohibited by law. Equal Housing Opportunity. Gulfview Construction is independently owned and operated and is not an affiliate of The St. Joe Company. The St. Joe Company does not guarantee the obligations of, nor provide any warranties for, unaffiliated or third-party builders who build homes in WaterSound Beach. Illustrations are artist's depictions only and may differ from completed improvements. Obtain the Property Report required by Federal Law and read it before signing anything. No Federal agency has judged the merits or value, if any of this property.

